

# TM3 Tapping Machine

Impact Sound Insulation Measurement Source



Remote Control

The TM3 Tapping Machine is a precision impact noise source for building acoustic measurements. It is typically used for the assessment of general impacts in dwellings that occur on floors or stairs in a building. The Tapping Machine complies to the standards ISO 16283-2, ISO 717-2, ISO 10140-3/-4/-5, ISO 140-6/-7/-8, DIN 52210-6, ASTM E492 and ASTM E1007.

## Key Features

---

- High-precision source for impact sound transmission testing
- Robust design with sturdy feet
- Mains or battery powered (up to 2 hours autonomous operation)
- Reliable remote control (315 MHz or 433 MHz)
- Manual operation supported
- Type tested by PTB Germany in accordance to ISO 10140-5

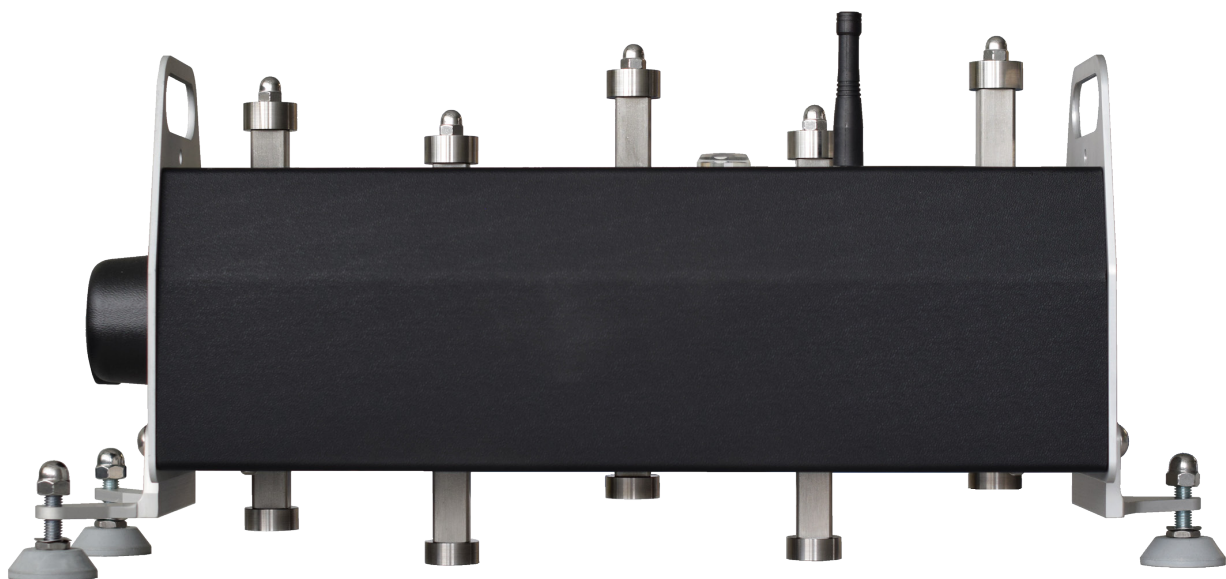
## Applications

---

Building acoustic measurements in compliance to ISO 16283-2, ISO 717-2, ISO 10140-3/-4/-5, ISO 140-6/-7/-8, DIN 52210-6, ASTM E492, ASTM E1007.

### Specifications TM3

Standards	ISO 16283-2, ISO 717-2, ISO 10140-3/-4/-5, ISO 140-6/-7/-8 DIN 52210-6, ASTM E492, ASTM E1007
Power supply Input Output Consumption	100 to 240 VAC, 50/60 Hz, 1.0 A 18 VDC $\pm$ 10%, 2.22 A 40 W max.
Battery Type Charge time Continuous operation	12 V, 3.2 Ah Lead-Acid gel (no maintenance required) approx. 8 hours up to 2 hours
Hammers Material Weight Diameter Distance between hammers Rated drop height	Stainless steel, hardened 500 g $\pm$ 6 g (1.1 lbs $\pm$ 0.212 oz) 30 mm $\pm$ 0.2 mm 100 mm (3.94") 40 mm (1.575")
Dimensions L x W x H	650 x 215 x 275 mm (25.6" x 8.5" x 10.8")
Weight (including battery)	10.2 kg (22.5 lbs)
Temperature, humidity Storage Operation	-20° to +70°C (-4° to 122°F) @ $\leq$ 90% RH (non-condensing) -10° to +50°C (14° to 158°F) @ $\leq$ 90% RH (non-condensing)
EMC conformity	EN 61326-1:2013 / CISPR11 / BS EN 55011:2009+A1:2010
Scope of supply (included)	<ul style="list-style-type: none"> <li>• Carrying bag</li> <li>• Battery charger</li> <li>• Drop height gauge</li> <li>• 17 mm wrench</li> <li>• Remote control sender &amp; antenna</li> <li>• Manufacturer calibration certificate</li> </ul>
Order information	NTi Audio # 600 000 520 (433 MHz) NTi Audio # 600 000 529 (USA, 315 MHz) NTi Audio # 600 000 528 (Japan, without RC)



TM3 Tapping Machine (side view)

*All informationen subject to change without prior notice.*